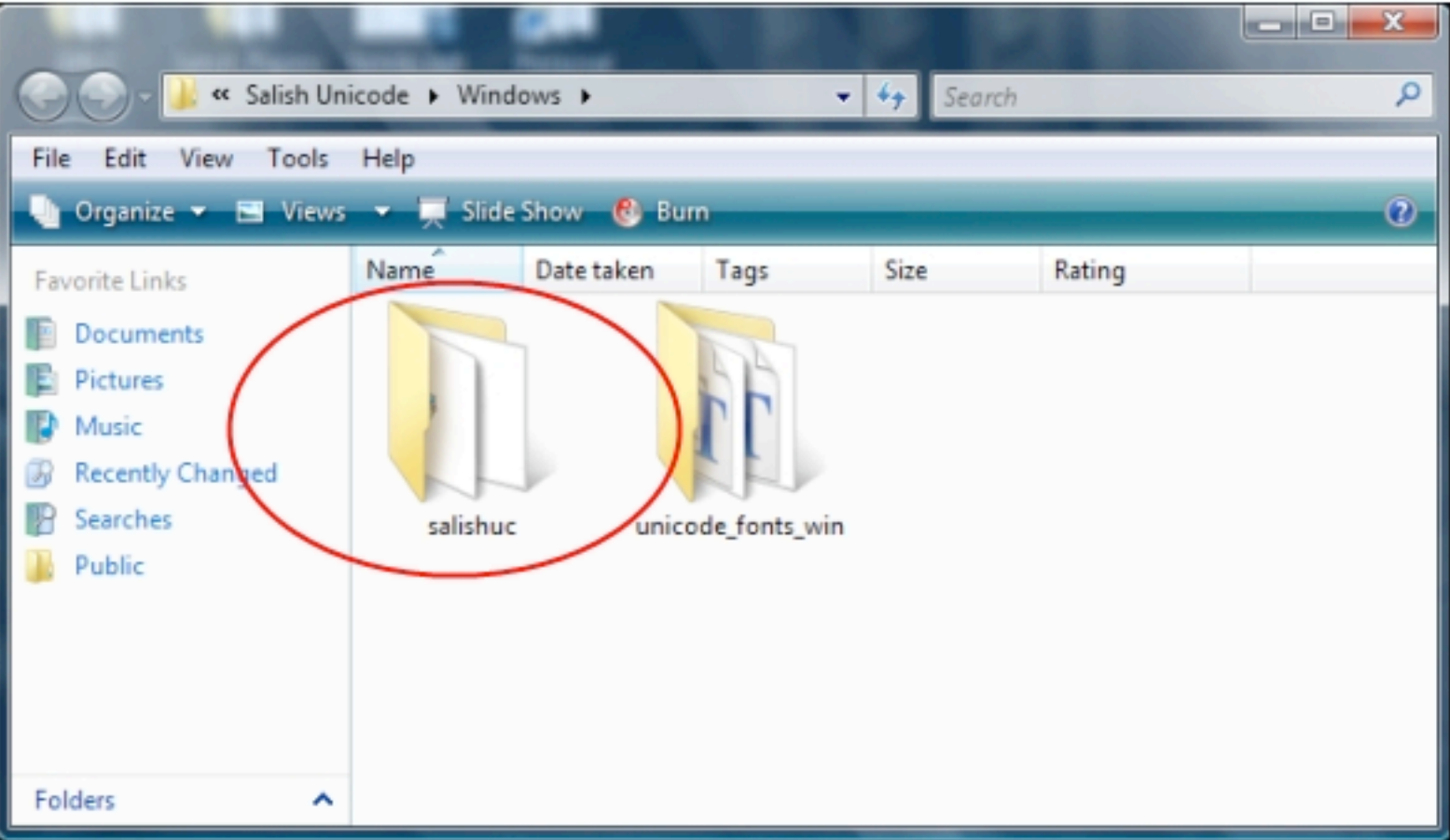
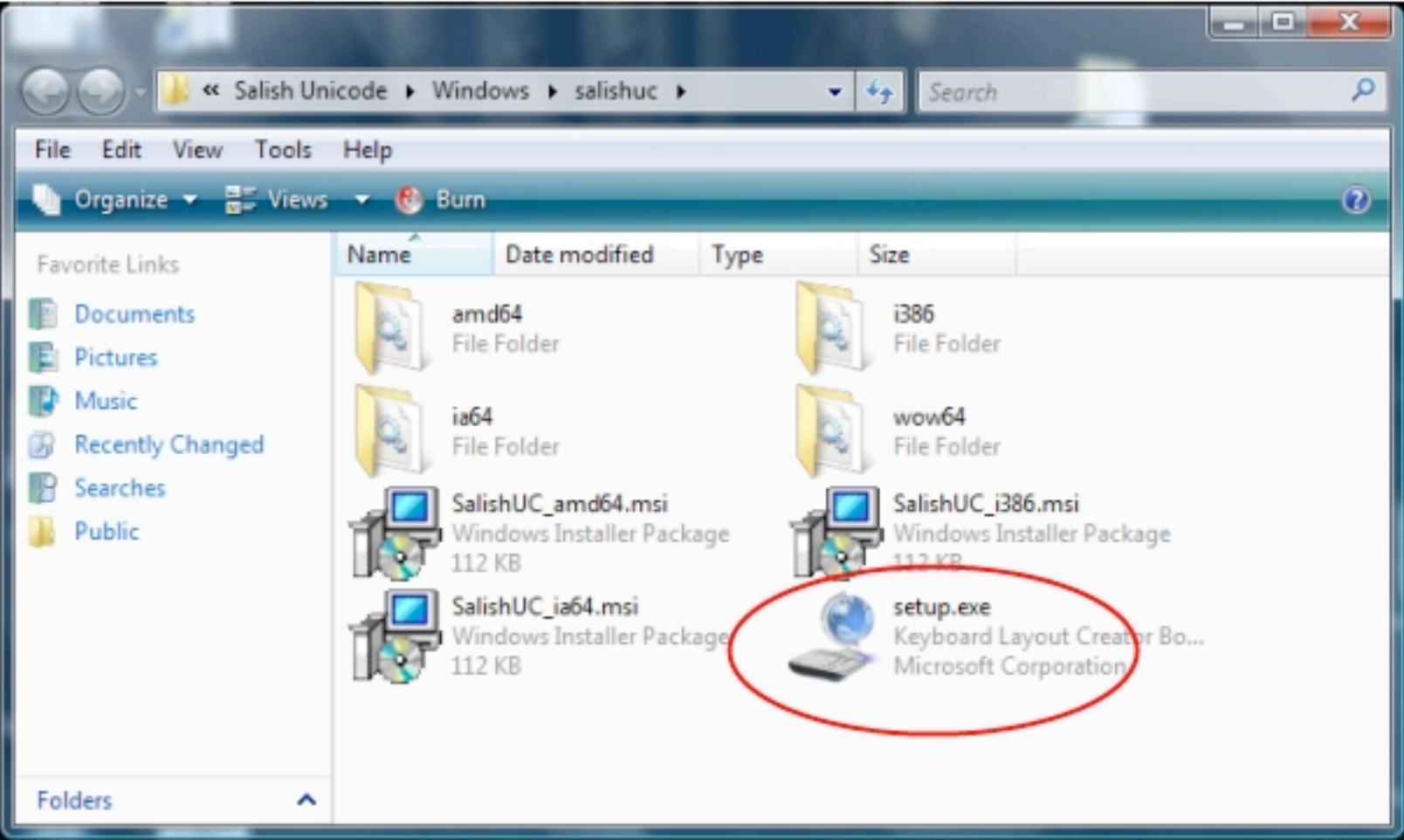
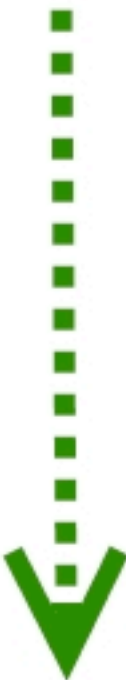


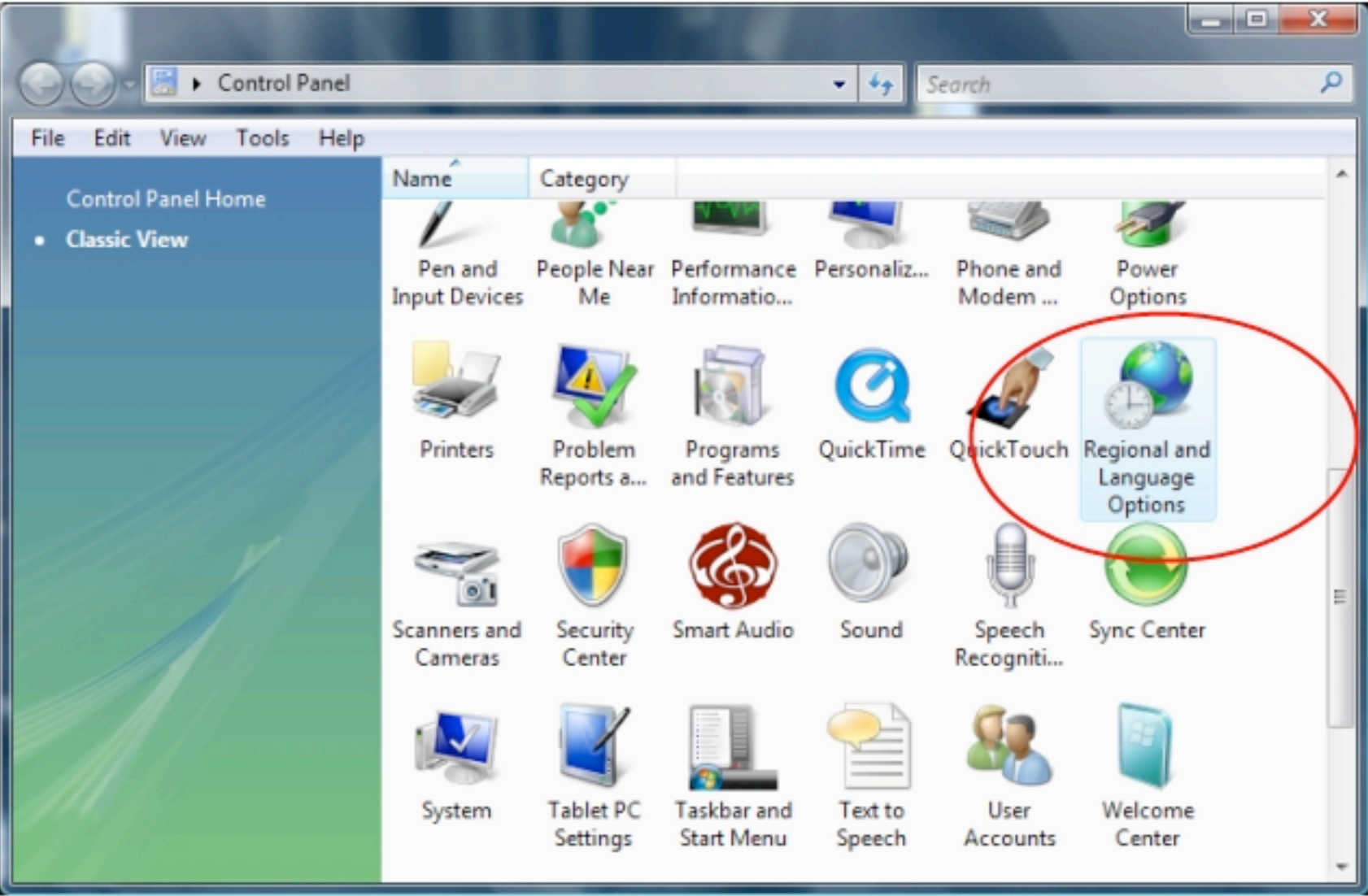
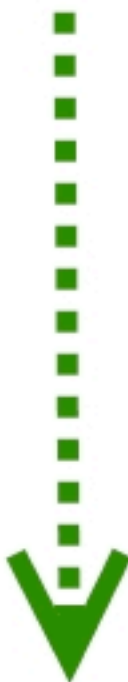
Installing keyboard layouts on Windows



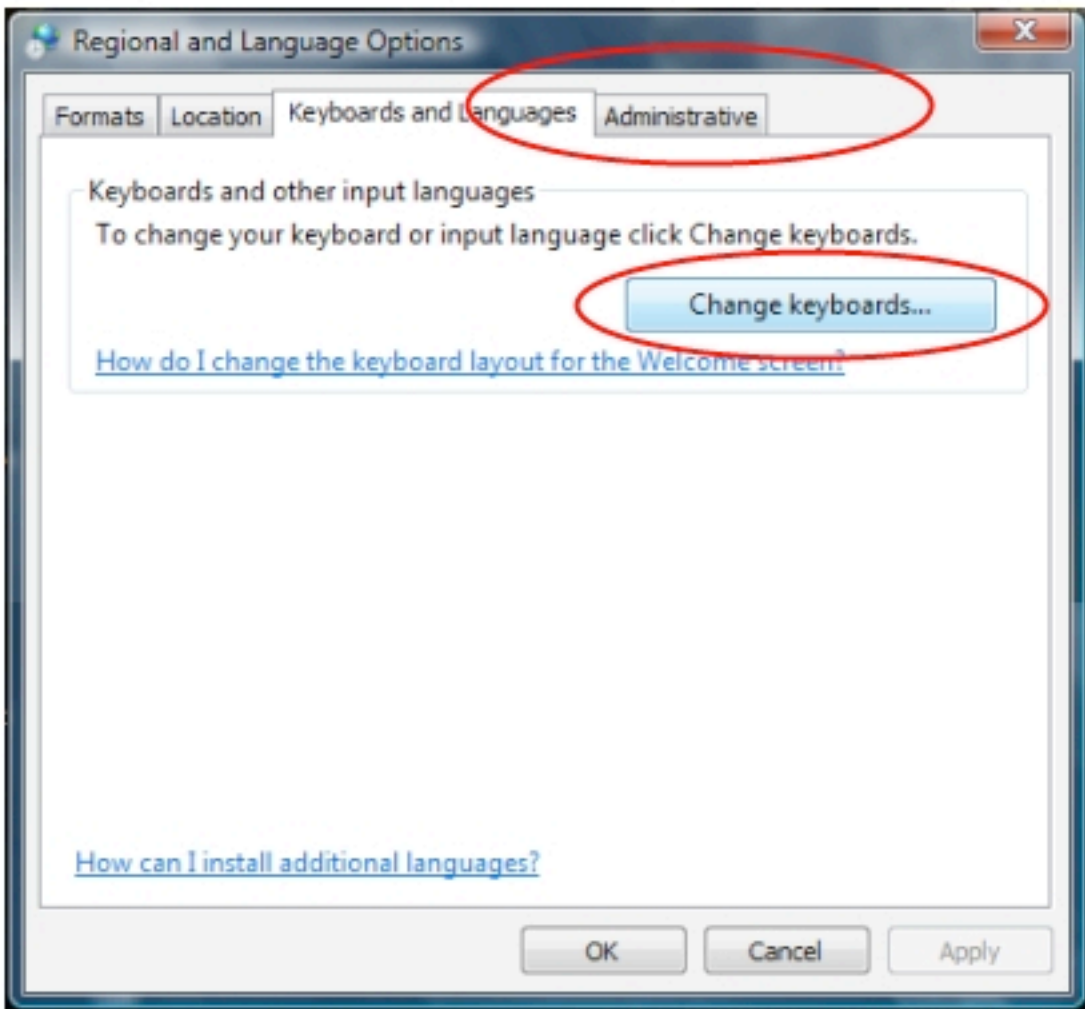
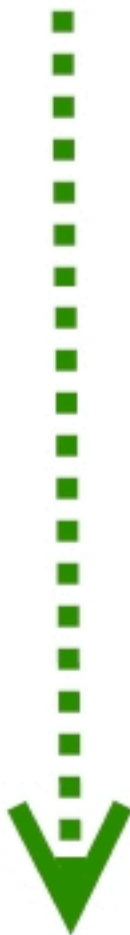
1. Open the folder, salishuc on the install disk.
(Salishkeyboarding > Salish Unicode > Windows)



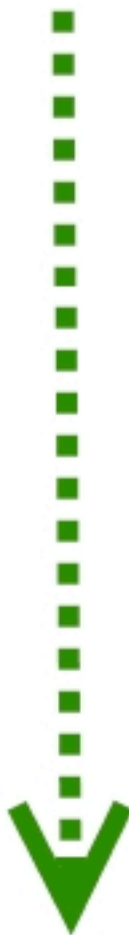
2. Run the installer by clicking on setup.exe



3. If alternate keyboards are not showing on your Taskbar, open Control Panel and open Regional and Language Options.



4. Select the tab, Keyboards and Languages and click on Change keyboards...



5. Under the General Tab, click the Add button. In the Add Input Language window, scroll down until you find Interior Salish Unicode. Check the box next to it. Click OK.

